



Immergas: leader in domestic gas boiler

For over 40 years Immergas has specialised in the design and production of domestic gas boilers. Thanks to the success of its high quality products, the company continues to expand, and today has 700 employees, factory and office space of 40.000 m2, and operations throughout Europe. Immergas devotes considerable resources to research, design and development of new products with its in-house research laboratory working closely with its Technical Office, which tests and finalizes new products. The



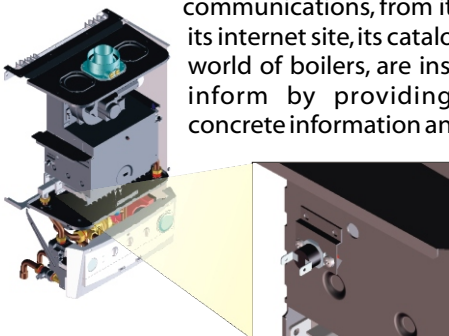
Research Centre also supports the production, assembly and testing functions. The company places the quality of the production process in evidence, as well as product quality, by inviting visitors to its plant to inspect the assembly and testing departments where they can see how each single boiler is tested under working conditions, as if it were already installed in the customer's home. The tests check both the boiler's performance and the correct working of all the safety devices.



Immergas has always believed in the key role played by the installer as the link between the company and its end customer and has thus invested considerable resources in training

programmes, while an ongoing contact between designers and installers allows it to present the customer with a range of products that meets their needs. To this end demonstration rooms have been set up with sophisticated computer-based equipment, and these are used by over 8,000 trade visitors a year. The Customer Care department works with the same objective, linking the installer and customer and maintaining an internet site on which information is available in real time.

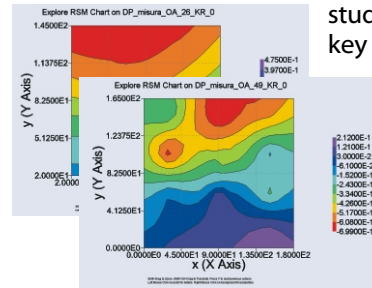
Immergas is distinguished also by the efficiency of its services provided to over 600 Authorised Service Centres which work to maximise the benefits deriving from the quality of the product and their interface with the installers. The company's communications, from its printed advertising to its internet site, its catalogues to its guides to the world of boilers, are inspired by the mission to inform by providing easy-to-understand, concrete information and explanations.



Visit the Immergas web site:
www.immergas.com

ANSYS CFX e modeFRONTIER in the immergas product development cycles

Right from the initial feasibility studies, ANSYS CFX-5 can simulate key factors such as emissions, efficiency parameters and fume behaviour, as well as complex combustion phenomena. ANSYS CFX-5 is able to simulate structural, thermal and fluid dynamic interactions, all in one environment.



Testing with modeFRONTIER is possible using DOE (Design Of Experiment) techniques, introducing cost and time savings from the initial stages of the project. The results of the tests enable modeFRONTIER to use extremely representative mathematical models that can be integrated with ANSYS CFX-5. Lastly, the decision support tools in modeFRONTIER and in particular Pareto Frontier, Parallel Chart and Multiple Criteria Decision Making take into account other aspects that, according to the stage of the project, may go beyond purely technical matters and embrace, for example, costs, market positioning and status regarding



Why Immergas chose ANSYS CFX and modeFRONTIER

"We already had a leading software package for the simulation of fluid dynamics, so we carefully evaluated the choice of EnginSoft", says Michele Landini, manager of Immergas's Technical Office. "An initial experience with CAE and Innovation Assessment helped us to clearly identify the cascade of benefits that the use of these products could give us. Next, and working with EnginSoft, we undertook some engineering work with results that were really convincing, in part because they agreed the test results. The tool is simple to use and with it you can work at the same time toward objectives of a different and conflicting nature. What's more, it approaches the experimental results to those obtained with CAE"